



FDT71KXZE1

7.1kW

Specifications

Nominal cooling capacity	kW	7.1
Nominal heating capacity	kW	8.0
Power source		1 Phase 220-240V 50Hz / 220V 60Hz
Power consumption	Cooling	kW 0.08-0.08
	Heating	kW 0.08-0.08
Sound power level	dB(A)	62
Sound pressure level Cooling	db(A)	P-Hi:47 Hi:35 Me:32 Lo:28
Exterior dimensions unit	H x W x D mm	Unit□236 x 840 x 840
Exterior dimensions panel	H x W x D mm	Panel□35 x 950 x 950
Net weight	kg	Unit□21.5□Standard panel□5
Air flow	m ³ /min	P-Hi□28 Hi□17 Me□14 Lo□12
Outside air intake		Possible
Panel		Fine Snow: (Standard, T-PSA-5BW-E) (Draft prevention,T-PSAE-5BW-E) Shadow Black: (Standard, T-PSA-5BB-E) (Draft prevention, T-PSAE-5BB-E)
Air filter, Q'ty		Pocket Plastic net x1 (Washable)
Remote control(option)		wired: RC-EX3A, RC-E5, RCH-3, wireless: White: RCN-T-5BW-E2 Black: RCN-T-5BB-E2
Installation data Refrigerant piping size	mm(in)	Liquid line:ø9.52(3/8") Gas line:ø15.88(5/8")
Refrigerant	Type/GWP	R410A / 2088

The data are measured under the following conditions(ISO-T1).

Cooling: Indoor temp. of 27°CDB, 19°CWB, and outdoor temp. of 35°CDB.

Heating: Indoor temp. of 20°CDB, and outdoor temp. of 7°CDB, 6°CWB.

External static pressure of indoor unit is 10Pa.

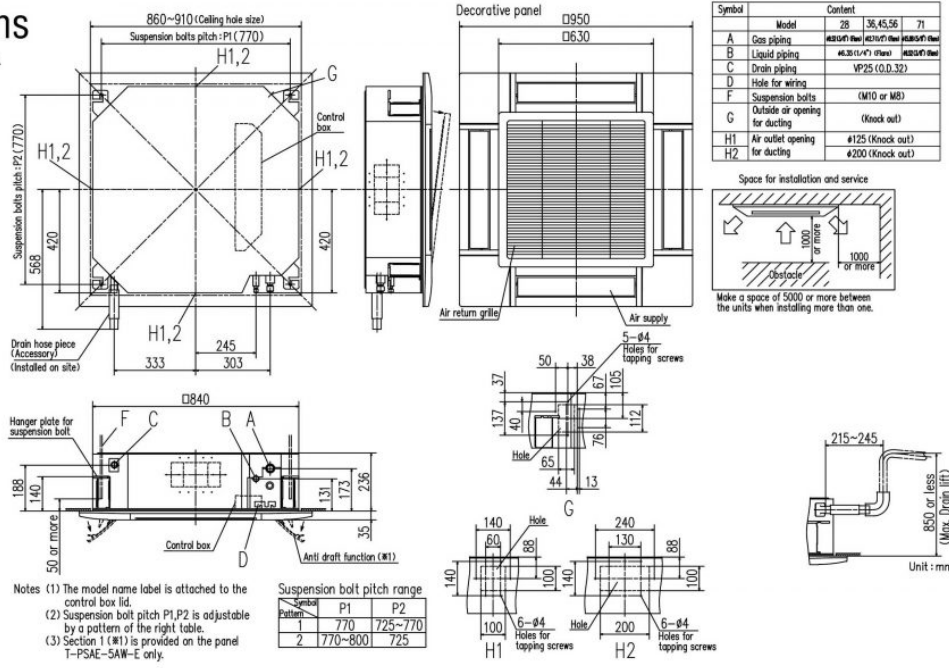
The sound level indicates the value of rear-intake type with duct in anechoic chamber. During operation these values are somewhat higher due to ambient conditions.

Schematics

Dimensions

All measurements in mm.

- FDT28KXZE1
- 36KXZE1
- 45KXZE1
- 56KXZE1
- 71KXZE1



Symbol	Model	28	36, 45, 56	71
A	Gas piping	Ø12.7 (1/2") (Max)	Ø15.8 (1/2") (Max)	Ø19.0 (3/4") (Max)
B	Liquid piping	Ø6.35 (1/4") (Max)	Ø7.94 (5/16") (Max)	Ø9.52 (3/8") (Max)
C	Drain piping	VP25 (O.D.32)		
D	Hole for wiring			
F	Suspension bolts	(M10 or M8)		
G	Outside air opening for ducting	(Knock out)		
H1	Air outlet opening for ducting	Ø125 (Knock out)		
H2	Air outlet opening for ducting	Ø200 (Knock out)		

- Notes
- (1) The model name label is attached to the control box lid.
 - (2) Suspension bolt pitch P1,P2 is adjustable by a pattern of the right table.
 - (3) Section 1 (A1) is provided on the panel Y-PSAE-SAW-E only.

Sectional Pattern	P1	P2
1	770	725~770
2	770~800	725

Unit : mm