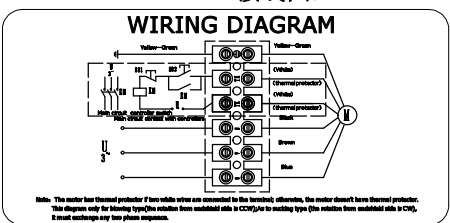


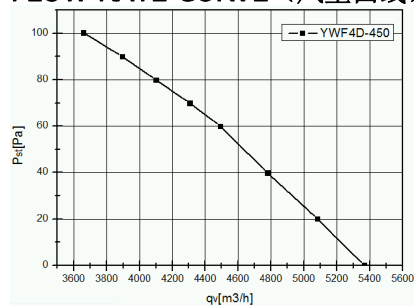
LABEL (铭牌):



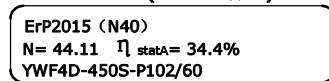
WIRING DIAGRAM (接线图):



FLOW RATE CURVE (风量曲线):



ErP2015 LABEL (ErP2015标签):



UNIT 类型	Axial fan motor 外转子轴流风机
MOTOR 电机型号	Three phases motor
MOTOR TYPE 电机型号	YWF4D-450S-P102/60-G
VOLTAGE 额定电压 (V)	380
FREQUENCY 频率 (Hz)	50
INPUT POWER 输入功率 (W)	250
CURRENT 电流 (A)	0.55
SPEED 转速 (r/min)	1350
AIR FLOW 20Pa 风量 (m³/h)	5080
NOISE 噪音 (dBA)	69
ROTATION 旋转方向	CW ,looking into the end-shield 顺时针, 从端盖端方向看
INSULATION CLASS 绝缘等级	F
MOTOR PROTECTION 电机保护	Thermocontact 150±5°C 热保护器
TEMPERATURE RISE 温升	75K max 运行温升不超过75K
PROTECTION CLASS 防护等级	IP54
OPERATING TYPE 工作定额	S1 连续工作制
AMBIENT TEMPERATURE 适用环境温度	-30°C +60°C
BEARINGS 轴承型式	Ball bearings 滚珠轴承
MOUNTING TYPE 安装方式	Horizontal or Vertical 垂直或水平安装
ELECTRICAL CONNECTION 电源线	Lead wire RV-90 4G 0.50mm²+2G 0.30mm² , Length 100mm in terminal box connected 接线盒 (4芯0.5mm²+2芯0.3mm²线长100mm)
APPROVALS 认证标记	CCC、CE
NET WEIGHT/GROSS WEIGHT 净重/毛重	8.0/9.0kg
PACKING 包装	48.5*48.5*22cm

						SIGN	DATE	TITLE
						DRN. BY		YWF4D-450S-P102/60-G
						CHD. BY		
						ENG. BY		
REV.	DESCRIPTION	APPROVED	DATE			APP. BY		PROJECTION
								A4 SCALE SHEET: of